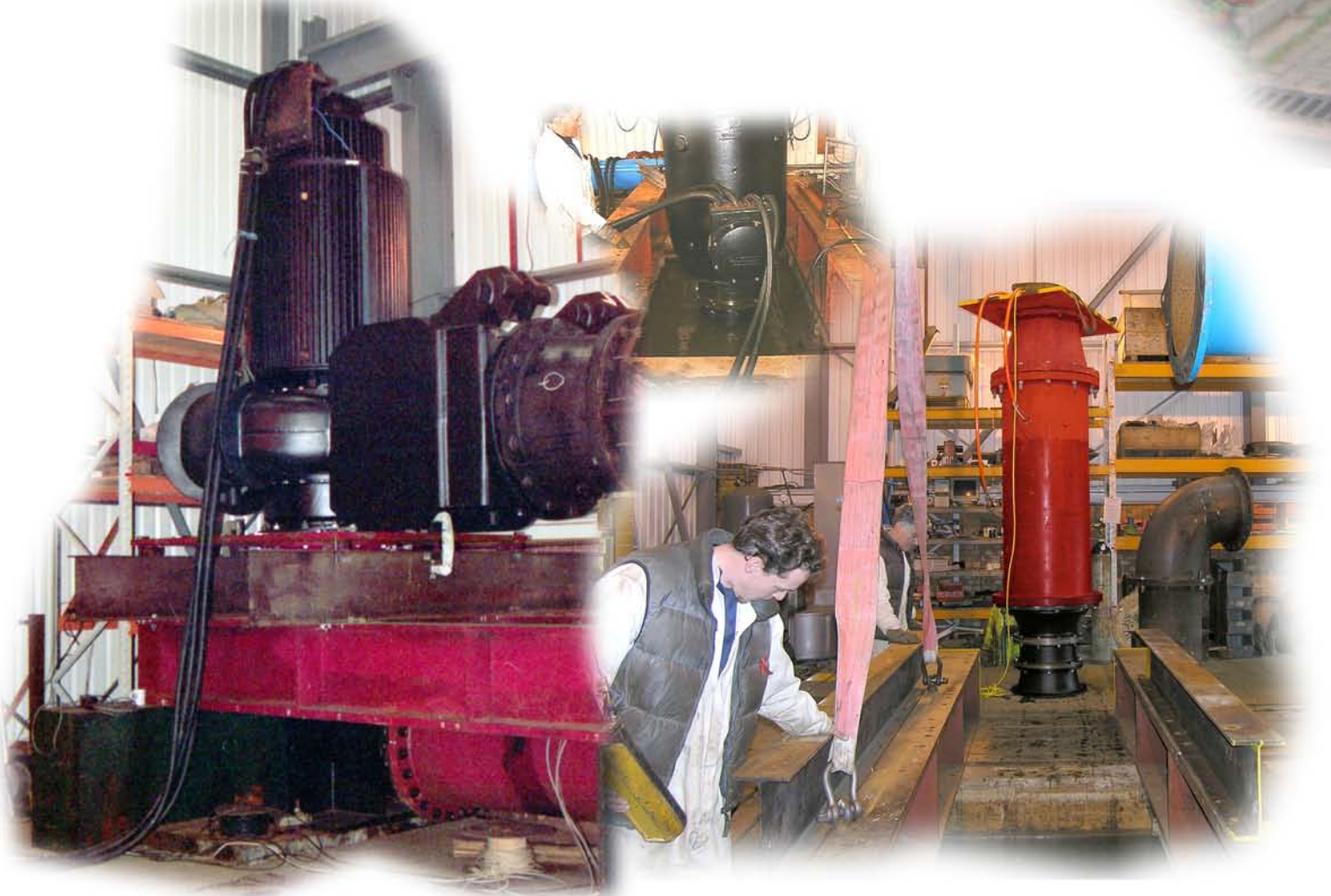


# PUMP PERFORMANCE TESTING

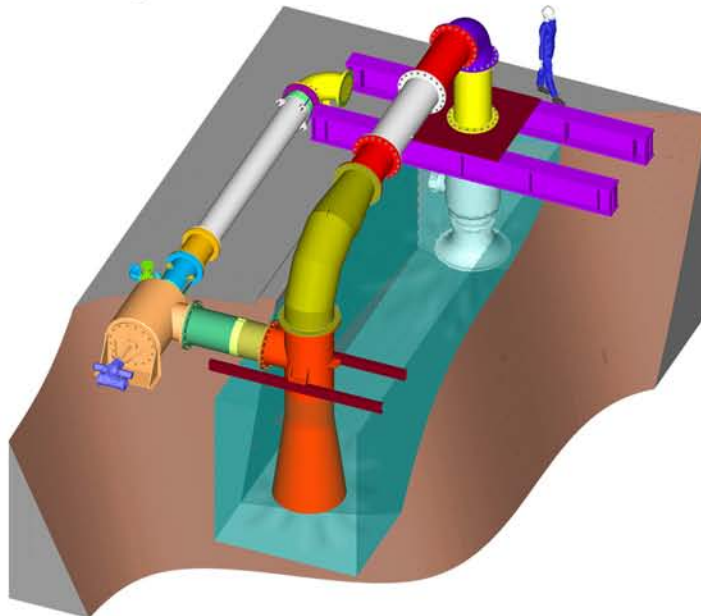


**BPL is one of Europe's leading manufacturers of large submersible and conventional pumps - volute and bowl types - to the water & waste water industry and flood defence.**



- All new pumps built at BPL are tested in accordance with ISO 9906 to verify performance and duty prior to despatch.
- In addition, we can test pumps returned for routine maintenance or service.
- Pumps made by other manufacturers can also be tested as part of a routine service contract.

- **Large, 60 cubic metre capacity sump**
- **Flow capacity up to 3000 l/s**
- **Heads up to 160m**
- **Instrumentation to PC based Data Logger**
- **Local power 350kW**
- **Generators up to 1MW**
- **"String Testing"**
- **Cooling Tower**



**Call us now for further details on:-**

**01234 852071**

Bedford Pumps Ltd  
 Brooklands  
 Woburn Road Industrial Estate  
 Kempston, Beds. MK42 7UH  
 England

Tel: +44 (0)1234 852071  
 Fax: +44 (0)1234 856620  
 email: [sales@bedfordpumps.co.uk](mailto:sales@bedfordpumps.co.uk)  
 Web: [www.bedfordpumps.co.uk](http://www.bedfordpumps.co.uk)



**BEDFORD PUMPS LTD.**  
 Part of the *hidralstat* group of companies